

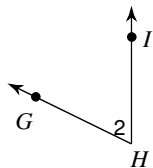
## Unit 2 worksheet 1 (classifying and naming angles)

© 2013 Kuta Software LLC. All rights reserved.

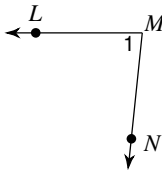
Date \_\_\_\_\_ Period \_\_\_\_\_

**Name each angle in three ways.**

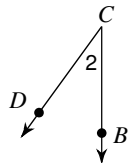
1)



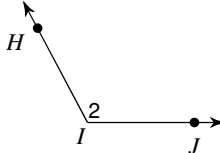
2)



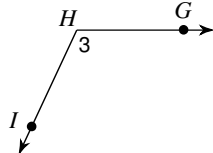
3)



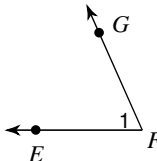
4)



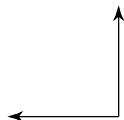
5)



6)

**Classify each angle as acute, obtuse, right, or straight.**

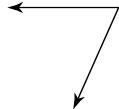
7)



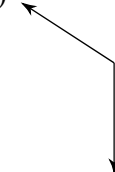
8)



9)



10)

11)  $72^\circ$ 12)  $109^\circ$ 13)  $180^\circ$ 14)  $90^\circ$

## Answers to Unit 2 worksheet 1 (classifying and naming angles) (ID: 1)

- |   |   |   |            |
|---|---|---|------------|
| 1) $\angle H, \angle 2, \angle GHI, \angle IHG$ | 2) $\angle M, \angle 1, \angle NML, \angle LMN$ | 3) $\angle C, \angle 2, \angle BCD, \angle DCB$ |            |
| 4) $\angle I, \angle 2, \angle HIJ, \angle JIH$ | 5) $\angle H, \angle 3, \angle GHI, \angle IHG$ | 6) $\angle F, \angle 1, \angle EFG, \angle GFE$ |            |
| 7) right  | 8) straight                                     | 9) acute  | 10) obtuse |
| 11) acute                                       | 12) obtuse                                      | 13) straight                                    | 14) right  |